

A century of sprawl in the United States

Christopher Barrington-Leigh^{a,1,2} and Adam Millard-Ball^{b,1}

^aInstitute for Health and Social Policy and McGill School of Environment, McGill University, Montreal, QC, Canada H3A1A3; and ^bEnvironmental Studies Department, University of California, Santa Cruz, CA 95064

Edited by Susan Hanson, Clark University, Worcester, MA, and approved May 6, 2015 (received for review March 2, 2015)

The urban street network is one of the most permanent features of cities. Once laid down, the pattern of streets determines urban form and the level of sprawl for decades to come. We present a high-resolution time series of urban sprawl, as measured through street network connectivity, in the United States from 1920 to 2012. Sprawl started well before private car ownership was dominant and grew steadily until the mid-1990s. Over the last two decades, however, new streets have become significantly more connected and grid-like; the peak in street-network sprawl in the United States occurred in ~1994. By one measure of connectivity, the mean nodal degree of intersections, sprawl fell by ~9% between 1994 and 2012. We analyze spatial variation in these changes and demonstrate the persistence of sprawl. Places that were built with a low-connectivity street network tend to stay that way, even as the network expands. We also find suggestive evidence that local government policies impact sprawl, as the largest increases in connectivity have occurred in places with policies to promote gridded streets and similar New Urbanist design principles. We provide for public use a county-level version of our street-network sprawl dataset comprising a time series of nearly 100 y.

road network | urban sprawl | transportation | policy | climate

The planet's population is undergoing the last phase of becoming urbanized, a once-only process resulting from technological advance and the centralization of resources. However, urban development over the last century has increasingly taken the form of sprawl, characterized by low densities, spatially segregated land uses, and a street network with low connectivity. Although sprawl has been documented in Europe, Latin America, India, and China (1, 2), it is most often associated with postwar urban development in the United States.

A large body of empirical evidence links sprawl with greater vehicle travel, material use, energy consumption, and greenhouse gas emissions (3, 4). Indeed, urban economists, historically sympathetic to sprawl as a desirable market outcome, have begun to focus more on its negative externalities and on the agglomeration benefits of dense cities (5). (Other sprawl-related externalities such as a reduction in social capital may exist as well but are more contentious in the literature. See, for example, ref. 6.) To the extent that congestion, carbon, and other taxes on private vehicle travel are set inefficiently low, the private market will produce too much sprawl.

On the time scale of several decades, some characteristics of the physical layout of urban areas can change in response to infrastructure, prices, and migration. For instance, buildings can be reshaped or replaced, and new infrastructure and services can arise. However, residential roads tend to remain where they were first placed. London (1666) and San Francisco (1906) are just two examples where cities have been rebuilt on an almost identical street network following devastating fires or earthquakes (ref. 7, p. 227). As the Intergovernmental Panel on Climate Change notes, the long-lived nature of the built environment tends to lock in energy consumption and emissions once urbanization occurs (4).

Moreover, because high-density living requires more frequent access to services outside the home, low-connectivity road networks limit the extent to which residential and commercial land uses can change. As a result, areas with low-connectivity road networks will have a limited ability to adapt even in the face of rising fuel or carbon taxes. Meanwhile, there is wide variation in the degree to which extant urban areas sprawl, and understanding the influences,

including possible future policies, on sprawl is key to evaluating and mitigating the possible “lock-in” effect of low-connectivity roads.

In the United States, given the doubling of fuel prices between the 1990s and mid-2014, policy efforts to promote smart growth and New Urbanism, and an apparent shift in consumer preferences toward urban living (8), one might expect an impact on new development. To date, however, the evidence has been mixed. Ramsey (9) reports that the share of infill housing construction increased in 2005–09 compared with 2000–04, and news reports announce the arrival of “peak sprawl” based on construction trends (10). In contrast, others (11) find that sprawl continued to increase, if only marginally, between 2000 and 2010. However, these studies usually rely on a comparison of just two or three time points, making it problematic to discern trends, and sprawl research in general has focused on describing and explaining cross-sectional differences in urban development in a single year.

Here, we provide a quantitative history of urban sprawl in the United States, as measured through the connectivity of the street network. We make three core contributions. First, we present, to our knowledge, the first high-resolution time series of sprawl from 1920 to 2012 based on our reconstruction of historical road networks for a substantial subset of US counties. It provides detail for small geographic areas and allows an unprecedented quantitative account of changes in urban form over the century. Using a complementary method that helps to validate our core results, we also develop a time series that covers the entire country but with lower time resolution and range. Second, we quantify the rise of sprawl in the urbanized United States since the early 20th century. We date the rise of sprawl to long before the private automobile became dominant and find that sprawl appears to have peaked in the mid-1990s. Importantly, because our measures are based on new urban streets, this turnaround is unlikely to be due to infill development on underused sites. Rather, today's newly built neighborhoods

Significance

Urban development patterns in the 20th century have been increasingly typified by urban sprawl, which exacerbates climate change, energy and material consumption, and public health challenges. We construct the first long-run, high-resolution time series of street-network sprawl in the United States. We find that even in the absence of a coordinated policy effort, new developments have already turned the corner toward less sprawl. Initial impacts on vehicle travel and greenhouse gas emissions will be modest given that the stock of streets changes slowly, but feedbacks are likely to mean that benefits compound in future years. Our publicly released data provide further opportunities for research on urban development and the social and environmental impacts of different urban forms.

Author contributions: C.B.-L. and A.M.-B. designed research, performed research, analyzed data, and wrote the paper.

The authors declare no conflict of interest.

This article is a PNAS Direct Submission.

Data deposition: The data reported in this paper have been deposited in the Dryad Digital Repository, datadryad.org (dx.doi.org/10.5061/dryad.3k502).

¹C.B.-L. and A.M.-B. contributed equally to this work.

²To whom correspondence should be addressed. Email: chris.barrington-leigh@mcgill.ca.

This article contains supporting information online at www.pnas.org/lookup/suppl/doi:10.1073/pnas.1504033112/-DCSupplemental.

appear to be less sprawling than their earlier counterparts. By directly identifying the properties of new construction, our metrics highlight the decisions that are driving change, even though the impact on the stock is gradual. Third, we provide evidence that urban sprawl is a persistent phenomenon—perhaps partly due to path dependencies in development decisions. There is a close correlation between the extent of sprawl in earlier time periods and that of contemporary development.

Measuring Street-Network Sprawl

We conceptualize sprawl as low connectivity in the street network. For a given geographic area, we construct measures of (i) mean nodal degree [i.e., the number of connected edges (incoming roads) at each intersection], (ii) the proportion of dead ends (i.e., nodes of degree one), and (iii) the proportion of nodes of degree four or more. Sprawl is characterized by a low nodal degree of intersections, a high proportion of dead ends, and a low proportion of nodes of degree four or more, all of which imply a street network with limited connectivity.

Our measures of sprawl, or related ones such as intersection density, are commonly used in urban planning and transportation research (12–15). However, the literature offers many alternative measures, such as density, contiguity of the built-up area, segregation of land uses, and urban design. Because sprawl is a multidimensional characteristic of urban areas, we discuss some of the alternative ways to operationalize it in *SI Appendix, section S3*.

We focus on street connectivity on theoretical and policy grounds. First, the connectivity of the street network is a semipermanent feature of the urban landscape and reflects decisions by cities and landowners at the time of initial development. Street rights of way are rarely vacated, so four-degree intersections usually remain that way. Opposition by homeowners fearing increased traffic, not to mention the costs of demolishing existing buildings, mean that dead-end streets also usually remain dead ends. In contrast, characteristics such as density tend to change over time in response to evolving prices, consumer preferences, and public policy. Second, street-network sprawl relates directly to important externalities such as greenhouse gas emissions and public health. Street connectivity is highly correlated with vehicle travel and modal split (3) and the incidence of diabetes, asthma, and similar health issues (16). Less connected streets increase the ratio of network distance to Euclidean distance, which reduces the generalized cost of driving relative to walking, and they are less conducive to pedestrian-oriented development and public transit service. Third, our measures of sprawl offer extremely high spatial and temporal resolution, rather than being constrained by the available geographic aggregation units, decadal gaps in census data, or the resolution offered by remote sensing technologies.

We therefore use “sprawl” as shorthand for “street-network sprawl” in the remainder of this article. *SI Appendix, section S3* provides more analysis of how our measures of sprawl relate to

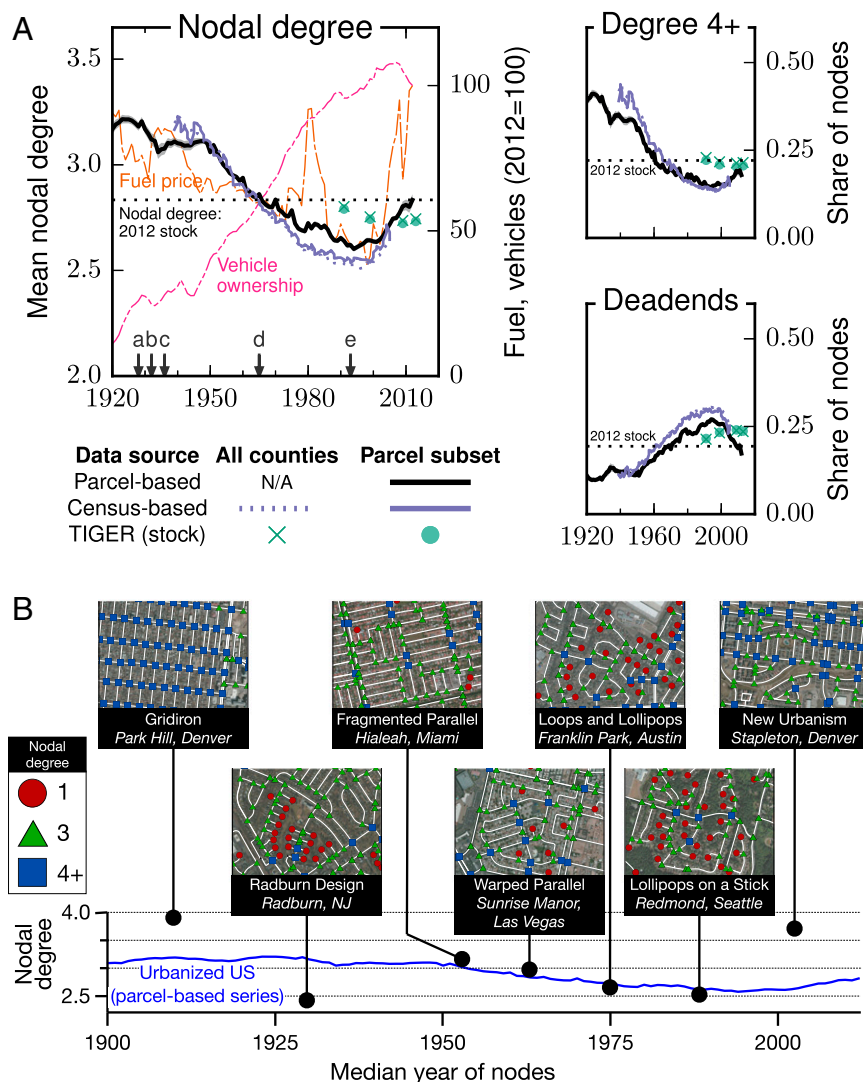


Fig. 1. Trends over time, US urbanized areas 1920–2012. Clearly evident are the rise in sprawl through most of the 20th century, the correlation with archetypal street designs, and the decline in sprawl since the mid-1990s. (A) The three measures of sprawl exhibit similar trends, with street networks becoming increasingly sprawl-like from 1950 through sprawl’s peak in 1994. The 95% confidence intervals are shaded or too narrow to be discernible. Our preferred time series is parcel-based, represented by the solid black lines. As described in *Materials and Methods*, we validate our findings using two alternative time series, which show broad agreement. A 5-y rolling mean is used before 1950. Also indicated in the *Upper* panel are key policy events noted in ref. 17: (a) the Radburn design, (b) report by the Committee on Subdivision Layout, (c) report by the Federal Housing Administration, (d) report by the Institute for Transportation Engineers, and (e) founding of the Congress for the New Urbanism. (B) We identify empirical examples of the five archetypal street design patterns described in ref. 17 and show that the nodal degree of these examples generally matches the overall trends. Location names refer to the approximate neighborhood or city (e.g., Park Hill) and the metropolitan area (e.g., Denver). We also illustrate the 1928 Radburn design and the recent New Urbanist development of Stapleton, which represent opposite extremes in terms of street connectivity. A widespread move toward New Urbanism would eventually restore levels of sprawl to early 20th century levels. Underlying images courtesy of ESRI/Digital Globe.

vehicle ownership and travel, and how they correlate with alternative metrics such as residential density.

Sprawl's Rise and Decline

The *Upper* panel of Fig. 1 shows the trends over time for each of the three measures of sprawl (nodal degree, fraction of dead ends, and fraction of nodes of degree four or more). Several conclusions are immediately evident.

First, Fig. 1 indicates a rise in sprawl since the mid-1920s, with an acceleration after 1950. The early beginning of sprawl is notable, given that it predates the postwar era of mass car ownership. However, it provides quantitative evidence to confirm historical accounts that date the emergence of cul-de-sacs and similar departures from gridiron street patterns to the early to mid-20th century. Southworth and Ben-Joseph (17), for example, note the influence of the 1928 design, with cul-de-sacs prominently featured, for Radburn, New Jersey; they also point to the influence of recommendations for cul-de-sacs in reports by the Committee on Subdivision Layout (1932), Federal Housing Administration (1936), and Institute for Transportation Engineers (1965). These discrete events do not capture the more gradual evolution in street network design from the 1950s through the early 21st century, but our results closely match the archetypal patterns reported in ref. 17 and illustrated in the *Lower* panel of Fig. 1.

Second, there is a clear peaking of new sprawl construction in the mid-1990s and a subsequent decline since 2000 to the level of the 1960s. Mean nodal degree rose from ~ 2.60 at sprawl's 1994 peak to ~ 2.83 in 2012. Although a reversal in street connectivity trends might be expected at some point in response to changes in fuel prices, the 1994 peak predates the post-2000 rise in gasoline prices. Conversely, the ~ 1980 spike in fuel prices was not associated with a similar reversal in sprawl. An alternative possibility is that, just as the 1928 Radburn design was associated with the initial rise in sprawl, the recent move toward more connected street patterns reflects the growth in New Urbanist thinking and policy since the Congress for the New Urbanism was founded in 1993. One prominent New Urbanist development, Stapleton, has a mean nodal degree of ~ 3.47 (Fig. 1*B*).

Our results are in contrast to recent findings (18) that street-network sprawl continues to increase, albeit at a slower rate than before (11). However, results in refs. 11 and 18 measure only the stock of streets (which we also illustrate in Fig. 1), whereas our method is sensitive to the year-by-year developments. Our results report a major turnover and reversal in the new contributions to that stock before the turn of the century. Thus, we identify two important turning points. In ~ 1994 , the nodal degree of new intersections (the flow) reached its minimum. Due to the existence of cities with dense, gridded cores, the road network stock was still tending toward more sprawl until ~ 2012 , when the nodal degree of new intersections rose to the level of the stock.

The trends are mirrored in individual metropolitan areas. The four Combined Statistical Areas (CSAs) shown in Fig. 2 are illustrative only, but a similar pattern is evident in other metropolitan regions, reported in *SI Appendix*, Fig. S6. In all cases, nodal degree falls most rapidly from the 1950s through the mid-1990s (ending earlier in the Minneapolis–St. Paul and Washington, DC regions) and has risen since the start of the 21st century. The differences between the metropolitan areas are most evident in terms of the level of sprawl (New York and Miami being less sprawling than Seattle and Los Angeles) rather than the relative trends. As discussed in detail in *The Dynamics and Persistence of Sprawl*, there is evidence of persistence in relative levels over time. The New York–Newark region, for example, is endowed with a historic stock of highly connected streets, and additions to this stock in almost every year are less sprawl-like than the other metropolitan regions illustrated.

Spatial Patterns

With urban form quantified at the level of individual intersections, we can generate a complete account of the dynamics of sprawl

over space and time. Fig. 3*A* shows three snapshots of postwar development for one illustrative region, the Minneapolis–St. Paul metropolitan area. Outside the 1950 core, degree three intersections became the dominant road form before 1980. The aggregate distribution of nodal degree values over time is shown in Fig. 3*B*, along with the overall volume of construction. Road edges connected to at least one degree four intersection are prevalent until the mid-1950s, when the proportions of dead ends and degree three nodes rise rapidly. A regrowth in the fraction of degree four nodes (at the expense of degree three and dead ends) is visible starting around 2000, before a steep decline in street construction following the housing market crash of 2007–08.

The maps in Fig. 3 do not emphasize the location of recent construction or changes in urban form. A second approach to help to understand where the changing development style is occurring, both within and between metropolitan areas, is shown in Fig. 4. It depicts the most recent levels of nodal degree, averaged to census block groups for selected major metropolitan areas. *SI Appendix* provides a similar view of new additions to the stock in recent years at the block group level, as well as snapshots of levels (stocks) in other years.

Blue areas, with high nodal degree, are characterized by the most grid-like road networks, and red and dark red represent the dead end and degree three neighborhoods characterizing sprawl. There are stark contrasts in accumulated development patterns that defy simple geographic generalizations. Many major cities have urban cores with a highly gridded structure, whereas some, like Atlanta, have very little. Most interestingly, the changes, shown in *SI Appendix*, Fig. S7, in mean nodal degree between 1991 and 2013 suggest recent trends that are not predicted simply by the stocks shown in Fig. 4, nor by a portrait of the stocks as they were in 1991 (*SI Appendix*, Fig. S7). Development in the suburbs of Seattle, the San Francisco Bay Area, and Dallas have shown significant increases in nodal degree, whereas the metropolitan area of Atlanta appears to have continued its embrace of low-connectivity, cul-de-sac road networks. In Boston, development patterns appear to have been different in the northern suburbs (higher nodal degree) than in the western areas. It should be noted that these maps disproportionately emphasize large (low-density) block groups, and much of the fine detail is not resolved in Fig. 4. Maps of a large number of urban areas are linked in *SI Appendix*.

We now turn our attention to a larger spatial scale and consider aggregate-level differences between metropolitan regions and counties. *SI Appendix*, Table S1 ranks US metropolitan areas

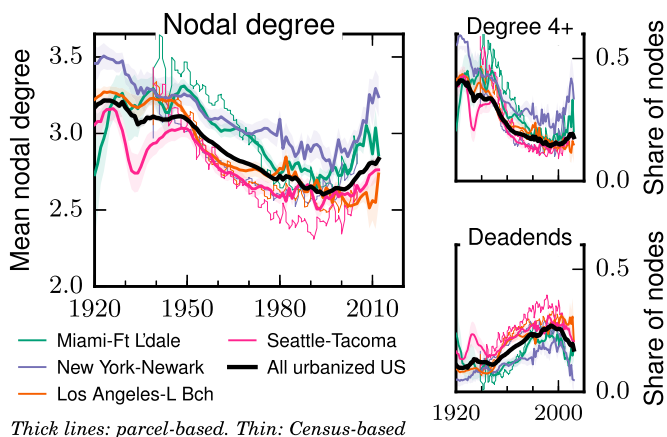


Fig. 2. Trends over time, selected metropolitan areas. Trends at the metropolitan area level largely mirror those for the United States as a whole. Data are for CSAs designated by the US Census Bureau. We focus on results from our parcel-based dataset (thicker lines, with 95% confidence intervals shaded), which only provides partial coverage of each CSA. However, similar results are obtained using our Census-based dataset (thinner lines), which is shown for comparison and covers all counties in a given CSA. Note: Before 1980, a 5-y rolling mean is used.

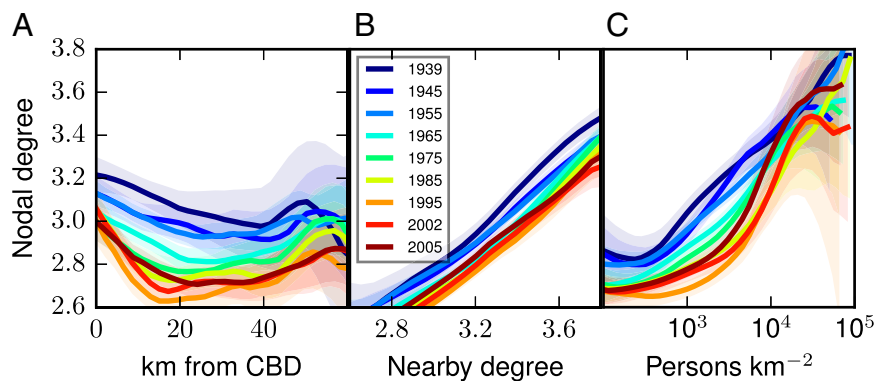


Fig. 5. Uniformity of shifts in sprawl. Nonparametric estimates of the connectivity of roads (mean degree of intersections) as a function of their distance from city center (A), of the mean nodal degree within 1 km in 2013 (B), and of the local population density (C). Over time the relationships fall roughly uniformly and then rise again. Shaded bands show 95% confidence intervals. Values are national averages from our parcel dataset.

quantify the role of local policies—not least, due to the lack of a comprehensive database on zoning regulations. Moreover, other factors clearly affect the connectivity of both the stock and new construction. For example, Fig. 4 and *SI Appendix, Tables S1 and S2* suggest some persistence over time. Counties and regions that were sprawling in the past continue to develop in a similar manner. The following section explores the theoretical basis and additional empirical evidence for this phenomenon.

The Dynamics and Persistence of Sprawl

What light can the full power of a spatial time-series of urban form shed on the dynamics of sprawl? Our nation-wide data provide evidence of remarkable persistence in differences across regions, simultaneously with roughly parallel shifts in development patterns in different regions over time.

The results in Fig. 5A, showing that nodal degree generally falls with distance from the city center, come as no surprise, given the spatial association between sprawl and suburbia. However, it is remarkable that the spatial gradient of street connectivity has remained relatively constant since 1939. Although sprawl was rising until ~1994 and declining thereafter, similar changes have occurred in city centers as in exurbs. A similar dynamic is in evidence when considering the gradient of sprawl against nearby development (Fig. 5B) and residential density (Fig. 5C). In principle, the changes in mean degree of road networks that we find in recent years could be due to a different pattern of where new intersections are built—for instance, as more infill development occurs in dense, urban cores with connected streets in adjacent neighborhoods, as shown in ref. 9. Changes in the amount of infill notwithstanding, our findings indicate that the decline in sprawl is also due to a different style of road network being built across a range of urban contexts. In other words, the changes cannot be explained simply by a new focus on infill in the city center but rather reflect a broader shift in development patterns across the entire metropolitan area.

Fig. 5 also suggests that there is persistence in relative terms in sprawl. In other words, places that were built with a low-connectivity street network tend to stay that way, even as the network expands. We examine persistence directly in Fig. 6. Metropolitan regions that had a sprawling street-network stock in 1991 experience the greatest level of sprawl for new construction in 1999–2013 (Fig. 6A). In general, the most sprawling regions in 1991 such as Atlanta and Charlotte continued in that vein in more recent years, as did regions at the opposite end of the sprawl spectrum, such as Dallas–Fort Worth. An even stronger relationship is seen at the county level (Fig. 6B), where our parcel-based series provides better temporal resolution. Furthermore, geographic variation in development patterns is persistent across even longer time periods; the development decisions that were taken more than 50 y ago are highly predictive of contemporary new development. Near the extreme, Denver, Colorado (home to the New Urbanist Stapleton development shown in Fig. 1B) was largely gridded in 1992, and virtually no dead ends were built in 2008–12 (Fig. 6B and *SI Appendix, Table S2*). In our view, this persistence highlights the importance of the

turnaround reported here, both because the turnaround is likely to be permanent and because it is despite large inertial influences.

These correlations between past and present sprawl may be due to the persistence of physical, geographic, and political factors, such as topography and political attitudes toward private car use. The correlations, however, may also indicate some path dependence. Lower density, car-oriented development offers greater returns for developers if it matches the prevailing pattern of development. Conversely, it makes less sense to build a walkable neighborhood if there is nowhere to walk to.

Conclusions

The quasi-permanence of roadways means that urban development decisions have effects that last for generations. The historic gridded centers of US cities and the narrow, winding streets of European medieval towns are still in place today (17), and the low vehicle travel and emissions of cities like San Francisco and New York are largely due to the fact that their street networks were laid down before the private car became dominant. Conversely, sprawl today—in the form of street networks with low connectivity and high proportions of dead ends—will lock in vehicle travel and emissions for decades to come.

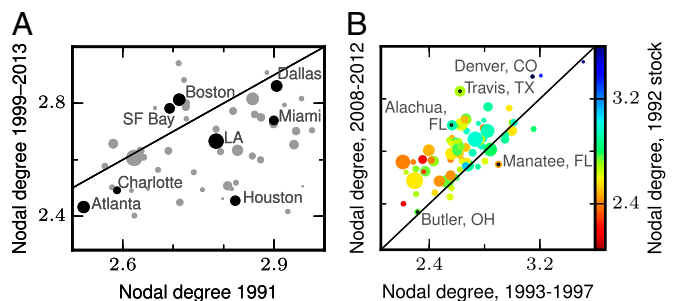


Fig. 6. Persistence of sprawl. (A) Nodal degree of new development, 1999–2013, against nodal degree of the stock (1991), by CSA. Labeled points are highlighted in a darker shade. Most metropolitan regions lie below the 45° line, indicating that the sprawl of the stock increased between 1999 and 2013, but as discussed in *Sprawl's Rise and Decline*, this is consistent with a turnaround in the connectivity of new construction given that the stock includes many gridded neighborhoods built before the era of mass car ownership. Data (TIGER-based series) are the same as *SI Appendix, Table S1*. (B) Nodal degree of new development, 2008–12 versus 1993–97. These time periods represent, respectively, the most recent years in our parcel-based dataset and the time when sprawl was at its peak in ~1993–97. Colors denote the stock of sprawl in 1992 and demonstrate the persistence of sprawl; counties that had high nodal degree in 1992, and also in the 1993–97 period, were more likely to build connected streets in 2008–12. Also, almost all counties lie above the 45° line, indicating a turnaround in the connectivity of new development. Data (parcel-based series for a subset of counties) are the same as *SI Appendix, Table S2*.

In this paper, we present a unique, geographically disaggregated, long-run time series that quantifies the rise of sprawl in the United States from the early 20th century, its acceleration from the 1950s, its peak in the mid-1990s, and its subsequent decline. Although the peak and decline are apparent across the country, we find tentative signs that the decline in sprawl is most pronounced where local governments have adopted policies to improve the connectivity of the street network—for example, by prohibiting or discouraging cul-de-sacs. Moreover, we find that the connectivity of recently built streets is strongly associated with the connectivity of the earlier stock. In other words, early patterns of street connectivity may influence the nature of recent development: Sprawl begets sprawl.

The impacts of low-connectivity street networks on vehicle travel and emissions are well-documented (*SI Appendix, Fig. S5*) (3). Thus, the impacts of a turnaround in sprawl are likely already being felt, and it is notable that street-network sprawl peaked just a decade before per-capita travel demand reached a maximum in the United States in 2005 (22). In other words, peak sprawl is one potential contributor to the “peak travel” phenomenon. Moreover, the persistence and path dependence of shifts in urban form will have implications for the energetics and greenhouse gas emissions of future inhabitants of suburban neighborhoods. Just as the existing stock of locked-in sprawl from the mid- to late 20th century represents an enormous inertia, newly developed, connected street patterns will continue to affect vehicle travel and emissions for the next century and beyond. Path dependence implies that street connectivity has a secondary effect through influencing the connectivity of future streets. Thus, although we do not quantify greenhouse gas emissions impacts in this article, feedbacks are likely to mean that reductions compound in the future. Emission scenarios that adopt a short time horizon and/or fail to account for path-dependence processes are likely to underestimate the climate policy potential of land-use and transportation strategies.

The local policies—in particular, ones directly targeting the nodal degree of intersections—which we have highlighted as contributing to less sprawling construction in some areas, can be seen as just one element in a package of policies to promote denser, mixed-use, connected development patterns. Pursuit of this agenda can shape the fundamental infrastructure and incentives that guide future sustainable urban development pathways, both in the United States and in fast-growing cities around the world.

Materials and Methods

We generate three different time series of sprawl. Each series uses the most recent vintage of TIGER/Line files from the US Census Bureau to characterize the

current road network but estimates the historical development of the network in a different way using (i) earlier vintages of the TIGER/Line files, (ii) the American Community Survey, or (iii) tax records for individual land ownership parcels. Because we are interested in urban sprawl, we limited our results to urbanized areas, defined as block groups where the majority of blocks were classified as urban in the 2010 Census. *SI Appendix, section S1* provides more details of data sources and our algorithms for constructing the three series:

- The TIGER/Line series computes our measures of sprawl for all counties in the United States using four different vintages of the TIGER/Line shapefiles, corresponding to the street network in 1991, 1999, 2009, and 2013.
- The Census-based series is constructed through assigning the median year built of residential units in each census block group to all streets in that block group.
- The Parcel-based series is constructed from tax records for individual land ownership parcels. We match each parcel to the street network using a combination of address and geospatial data and succeed in matching 95.1% of the 23,191,172 parcels for which we have year-built information. The 226 counties in the parcel-based series account for 9.7% of the 2,338 counties and county equivalents in the United States with at least one urbanized block group and a higher (32.7%) share of the urbanized area population. *SI Appendix, Fig. S1* shows the spatial distribution of the counties in our parcel-based series.

In short, the different time series all rely on the 2014 vintage of the TIGER/Line files but use different data sources to reconstruct the historical development of the street network through estimating the year in which each network edge was built. In general, we use the parcel-based series to report our main results, given the high resolution and length of the series, and because (unlike the Census-based series) it does not make assumptions about homogeneity of construction dates within a census block group. We rely on the TIGER/Line and Census-based series to validate our findings and assess the extent to which the parcel-based series provides results that are representative of the entire United States.

Note that the TIGER/Line series reflects the characteristics of the stock of streets in a given year. The other two series reflect the construction of new streets in a given year—that is, additions to the stock.

Data series in tabular, geographic, and graph theoretic formats; an interactive map explorer of summary data; and road evolution videos are available online at sprawl.ihsp.mcgill.ca/PNAS2015. Downloadable data are also archived at dx.doi.org/10.5061/dryad.3k502.

ACKNOWLEDGMENTS. We thank John Ford, Drew Natuk, Parker Welch, Tabitha Fraser, and Chris Thomas for excellent research assistance and Danny Cullenward, Kevin Manauagh, and Navin Ramankutty for comments on an early draft. We also thank numerous counties (listed in *SI Appendix*) for providing parcel data. This work benefited greatly from the open source tools Pandas, Matplotlib, Git, and their dependencies. This work was partially funded by grants from the Canadian Social Sciences and Humanities Research Council, the Sustainable Prosperity Network, and the University of California Santa Cruz Committee on Research.

1. Siedentop S, Fina S (2012) Who sprawls most? Exploring the patterns of urban growth across 26 European countries. *Environment and Planning – Part A* 44(11):2765–2784.
2. Seto KC, Sánchez-Rodríguez R, Fragkias M (2010) The new geography of contemporary urbanization and the environment. *Annu Rev Environ Resour* 35(1):167–194.
3. Ewing R, Cervero R (2010) Travel and the built environment. *J Am Plann Assoc* 76(3): 265–294.
4. Seto K, et al. (2014) Human settlements, infrastructure and spatial planning. *Climate Change 2014: Mitigation of Climate Change. Contribution of Working Group III to the Fifth Assessment Report of the Intergovernmental Panel on Climate Change* (Cambridge Univ Press, Cambridge, UK).
5. Glaeser E (2011) *Triumph of the City: How Our Greatest Invention Makes Us Richer, Smarter, Greener, Healthier and Happier* (Macmillan, Basingstoke, UK).
6. Brueckner JK, Largey AG (2008) Social interaction and urban sprawl. *J Urban Econ* 64(1):18–34.
7. Fradkin PL (2005) *The Great Earthquake and Firestorms of 1906. How San Francisco Nearly Destroyed Itself* (Univ of California Press, Berkeley, CA).
8. Nelson AC (2013) *Reshaping Metropolitan America. Development Trends and Opportunities to 2030* (Island Press, Washington, DC).
9. Ramsey K (2012) *Residential Construction Trends in America's Metropolitan Regions* (United States Environmental Protection Agency, Washington, DC).
10. Badger E (2013) Have we reached peak sprawl? *Atlantic Cities*. Available at www.citylab.com/housing/2013/10/have-we-reached-peak-sprawl/7102/. Accessed May 19, 2015.
11. Hamidi S, Ewing R (2014) A longitudinal study of changes in urban sprawl between 2000 and 2010 in the United States. *Landsc Urban Plan* 128:72–82.
12. Parthasarathi P, Hochmair H, Levinson D (2015) Street network structure and household activity spaces. *Urban Stud* 52(6):1090–1112.
13. Knaap GJ, Song Y, Nedovic-Budic Z (2007) Measuring patterns of urban development: New intelligence for the war on sprawl. *Local Environ* 12(3):239–257.
14. Guo Z (2009) Does the pedestrian environment affect the utility of walking? A case of path choice in downtown Boston. *Transp Res Part D Transp Environ* 14(5):343–352.
15. Clifton K, Ewing R, Knaap GJ, Song Y (2008) Quantitative analysis of urban form: A multidisciplinary review. *Journal of Urbanism: International Research on Placemaking and Urban Sustainability* 1(1):17–45.
16. Marshall WE, Piatkowski DP, Garrick NW (2014) Community design, street networks, and public health. *Journal of Transport & Health* 1(4):326–340.
17. Southworth M, Ben-Joseph E (2003) *Streets and the Shaping of Towns and Cities* (Island Press, Washington, DC), 2nd Ed.
18. Giacomini DJ, Levinson DM (2015) Road network circuitry in metropolitan areas. *Environ Plann B Plann Des*, 10.1068/b130131p.
19. City of Dallas (1998) *City of Dallas Comprehensive Plan Vol. I: Goals and Policies* (City of Dallas, Dallas).
20. Handy S, Paterson RG, Butler K (2003) *Planning for Street Connectivity: Getting From Here to There* (APA Planning Advisory Service, Chicago).
21. Litman T (2014) *Roadway Connectivity in TDM Encyclopedia* (Victoria Transport Policy Institute, Victoria, Canada).
22. Millard-Ball A, Schipper L (2011) Are we reaching peak travel? Trends in passenger transport in eight industrialized countries. *Transp Rev* 31(3):357–378.